



BASE MILANO

VENUE SHEET

From factory to  
cultural hub, a  
unique venue for  
events in Milan.

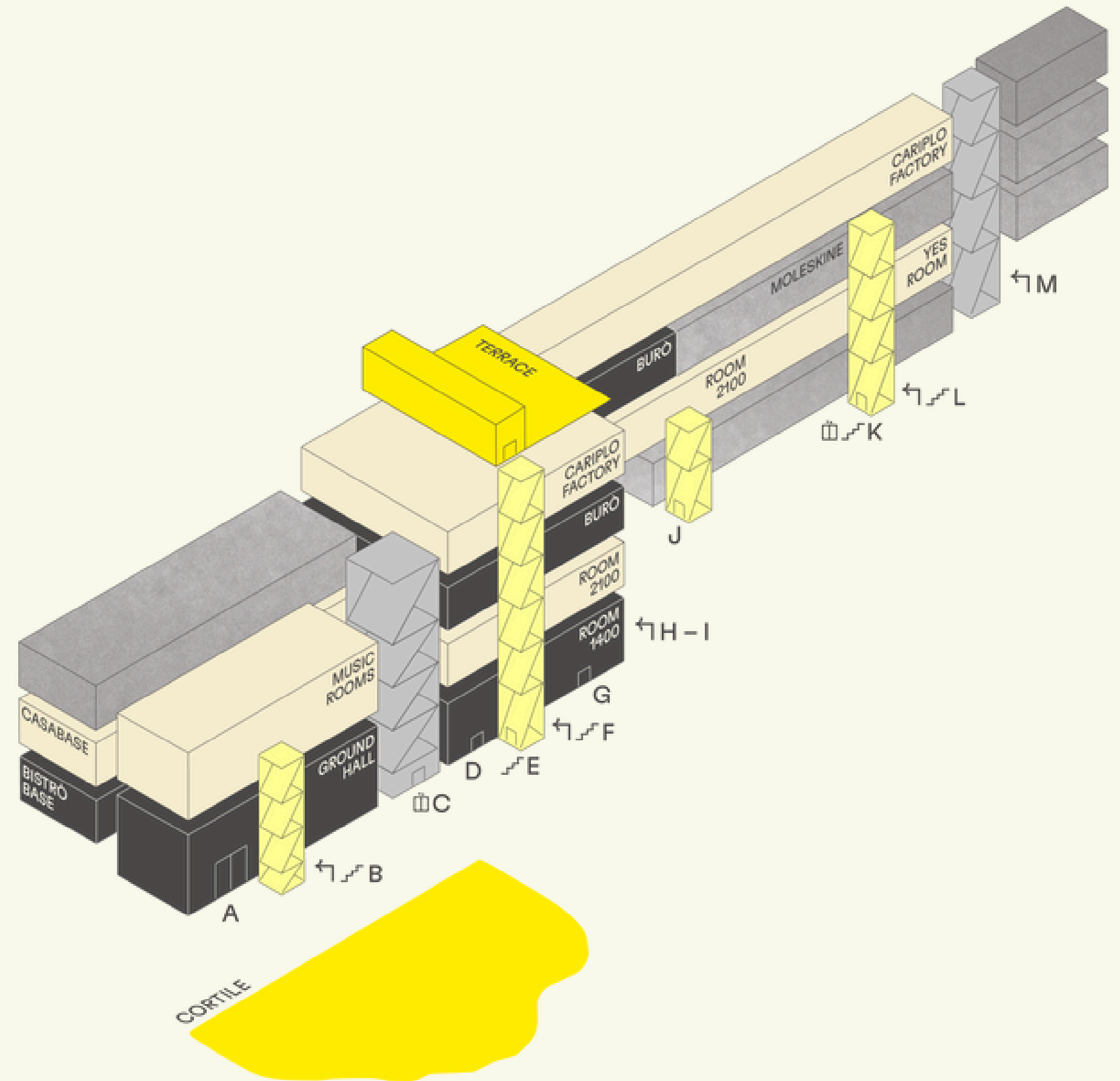
BASE MILANO

VENUE SHEET

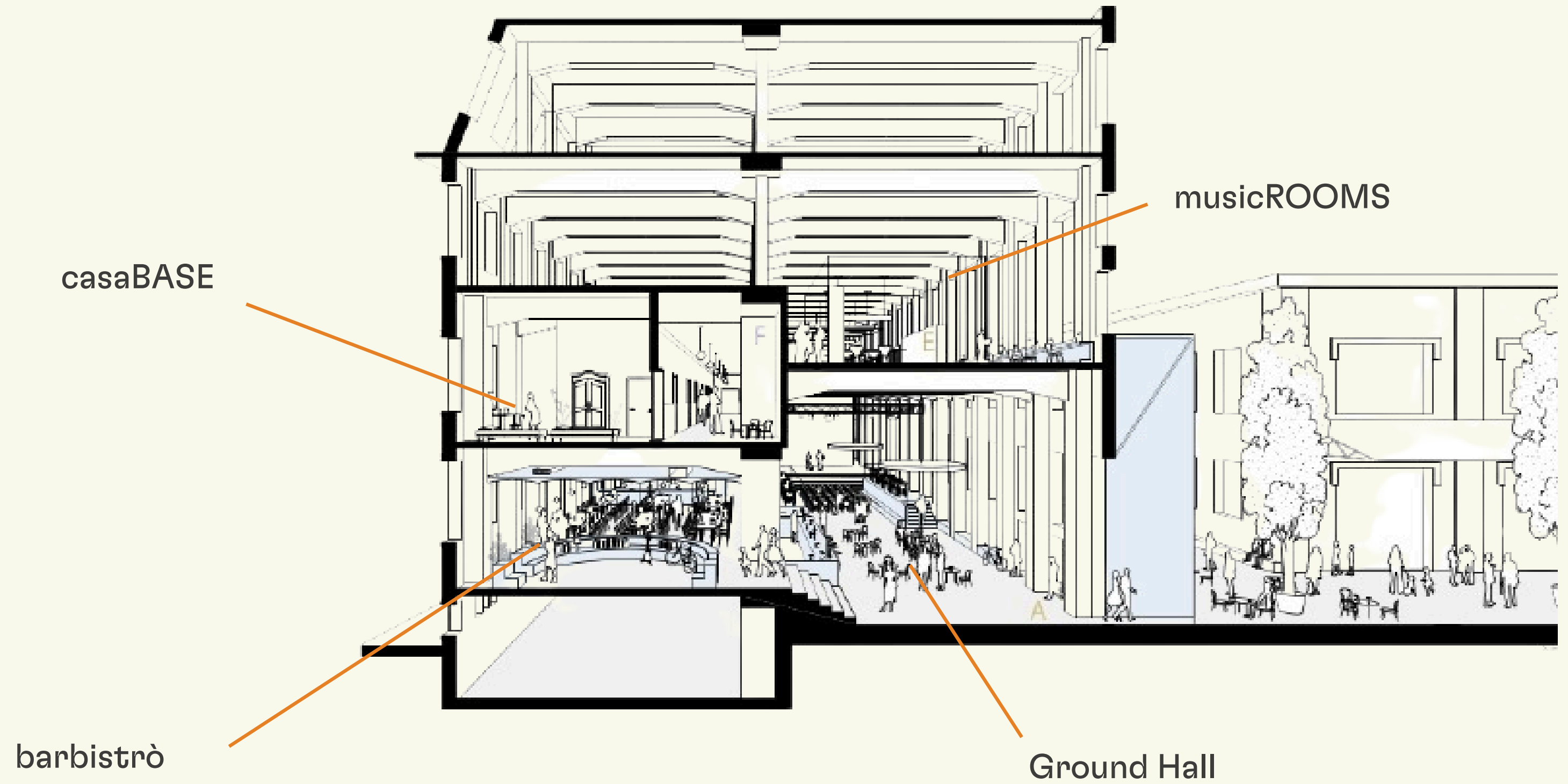
# THE SPACE



Choosing BASE means hosting your event in a historic former factory, a landmark of Milan, while becoming part of an open and inclusive cultural project that is mindful of social and environmental impact and fosters connections between communities, ideas, and diverse forms of expression.



# The space





Cariplo Factory

Burò / Project House

ROOM 2100

ROOM 1400

This architectural section drawing illustrates a multi-story building with a central vertical core. The drawing is divided into four horizontal levels. The top level is labeled 'Cariplo Factory' and shows a large, open space with a high ceiling and a central staircase. The second level is labeled 'Burò / Project House' and features two large, open-plan areas with tables and chairs, suggesting a workspace or common area. The third level is labeled 'ROOM 2100' and shows a large, open-plan area with a central staircase and a large window. The bottom level is labeled 'ROOM 1400' and shows a large, open-plan area with a central staircase and a large window. To the right of the building, there is a large, stylized tree and a group of people sitting on a bench, indicating a public space or courtyard. The drawing uses a combination of black lines for structural elements and orange lines for specific areas or paths.

BASE MILANO

VENUE SHEET

# COURTYARD





# Courtyard

BASE's courtyard is the heart of the former Ansaldo factory: tables, benches, a stage beneath a large tree, and a summer bar create a truly unique atmosphere. Even in winter, it retains its charm, transforming into a versatile space for aperitifs, corporate lunches, and live events.

## DETAILS

- Use of chairs and tables (to be agreed upon)
- Stage: 4m x 6m x 0.6m with truss ring
- Audio and lighting system (available upon request)
- Entrance Via Bergognone 34 (370 x h440 cm)
- Entrance Via Tortona 54 (520 x h490 cm)
- Available hours for audio system: 6:00 PM – 00.00 AM

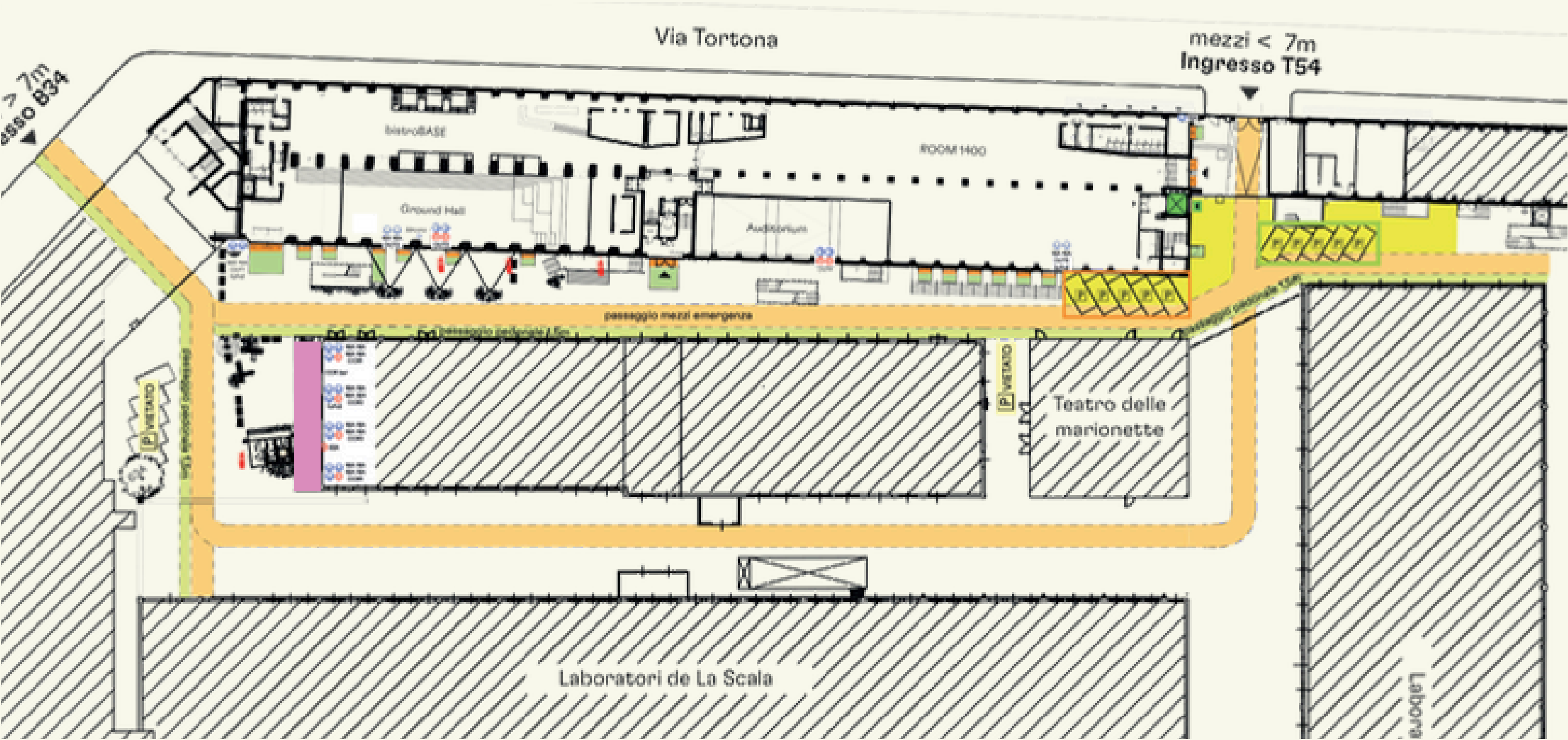




# Courtyard

LEGEND

- Non-occupiable area – vehicle passage
- Non-occupiable area – pedestrian passage
- Bar area



BASE MILANO

VENUE SHEET

# GROUND HALL





# Ground Hall

The Ground Hall is BASE's main hall: multifunctional, versatile, and connected to the courtyard and bistro. Perfect for talks, screenings, performances, dinners, or immersive installations, it is one of Milan's most iconic cultural hubs, where impactful events come to life.

## DETAILS

- Ground floor
- 400 mq
- Heating / Air conditioning
- Dedicated Wi-Fi available upon request
- Restrooms
- Entrance from courtyard
- Ceiling height: 8.3 m; Beam height: 7.6 m
- Audio and lighting system (as per technical rider)
- Tiered wooden stage
- Wheelchair platform for stage access
- Electric blackout curtains
- Capacity: 200 seated, 1000 standing

N.B. The number of people varies depending on the type of event and setup.









BASE MILANO

SCHEDA VENUE

# BISTRÒ



# Bistrò

Overlooking the Ground Hall, the Bistrò is the most convivial space at BASE. Always open to the public with a bar and study area, it can be separated and dedicated to aperitifs, lunches, presentations, or informal moments supporting the main events.

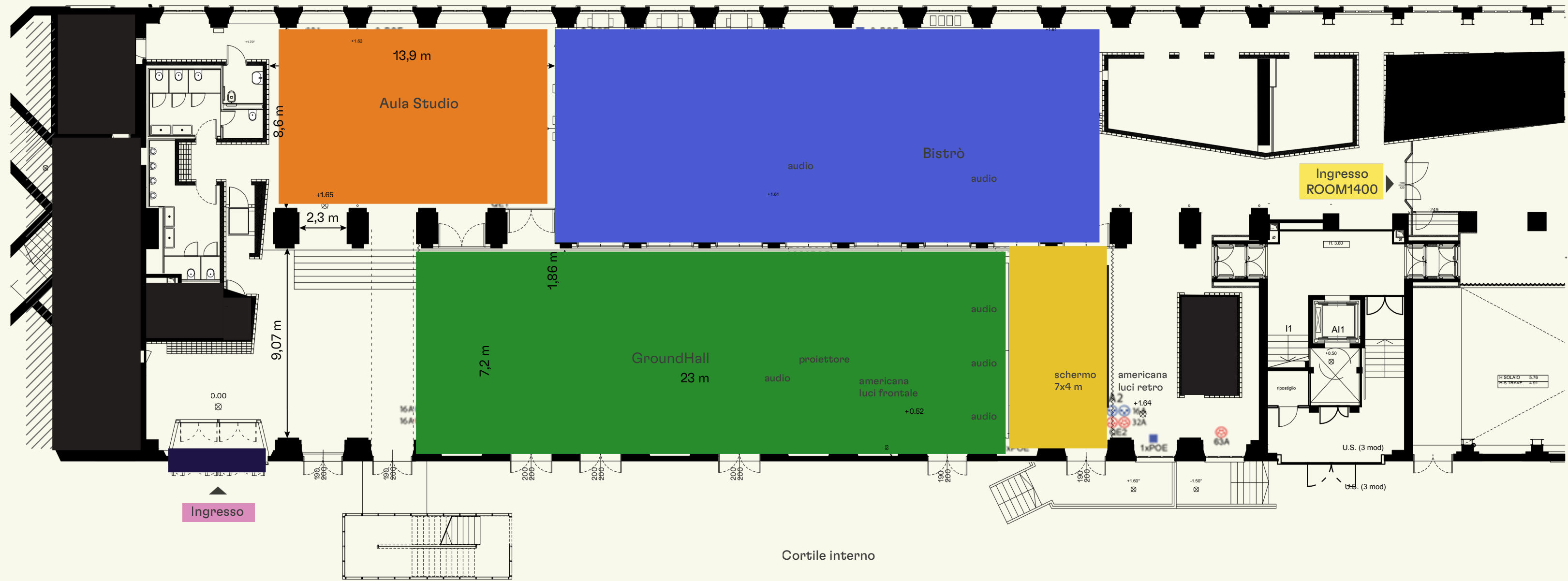
## DETAILS

- Mezzanine floor
- 120 mq (expandable into the bar area upon request)
- Heating / Air conditioning
- Dedicated Wi-Fi available upon request
- Restrooms
- Stairlift for disabled access
- Ceiling height: 4.6 m; Beam height: 4.2 m
- Sound diffusion system near the bar
- Capacity: 80 seated, 150 standing

N.B. The number of people varies depending on the type of event and setup.



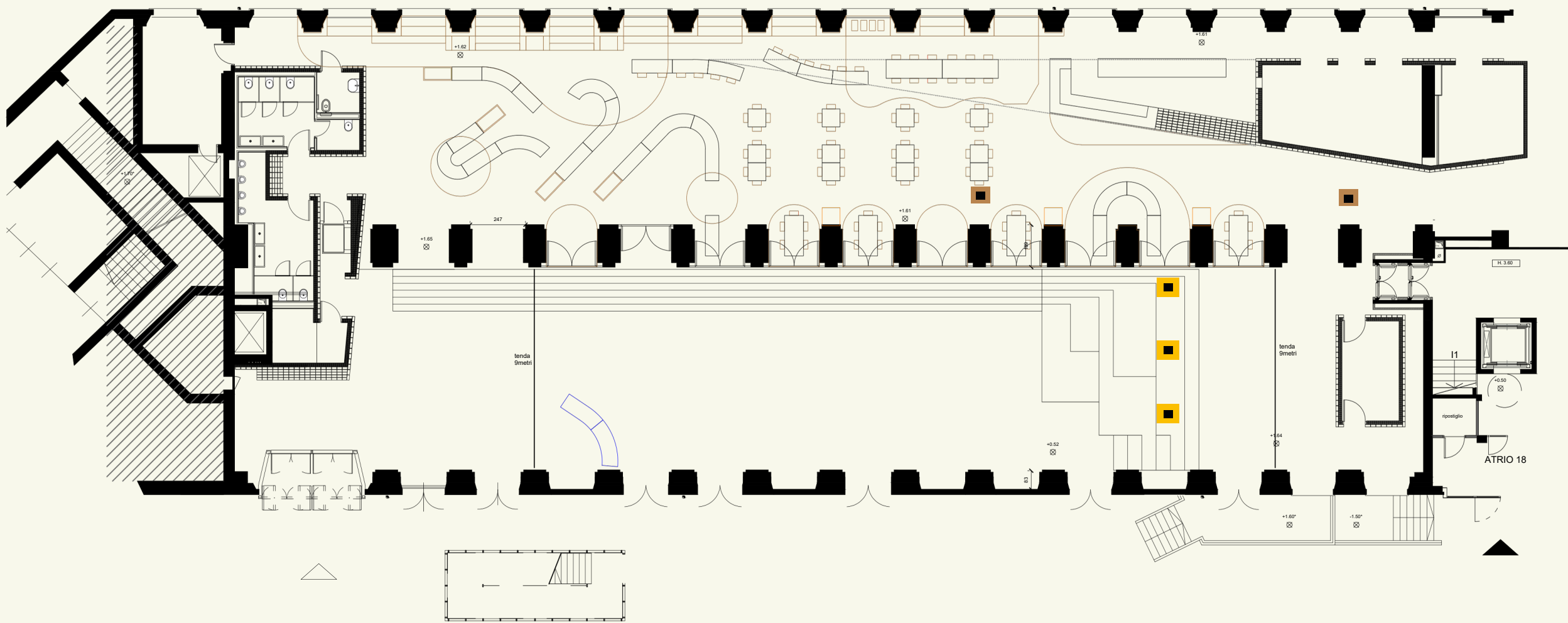
# Ground Hall & Bistrò



LEGEND

- |                         |                                     |
|-------------------------|-------------------------------------|
| <div></div> Ground Hall | <div></div> Entrance door (171x300) |
| <div></div> Aula Studio | <div></div> Wooden stage            |
| <div></div> Bistrò      | <div></div> Non-occupiable areas    |

# Ground Hall & Bistrò



## Technical rider

Modular and distributed Mitus series Line Array audio diffusion system by FBT. The entire system can be expanded as needed. Analog spare transport 32in-8out. Two digital CAT6 transports available depending on technical requirements.

## VIDEO

### OVERHEAD CRANE IN FRONT OF THE STAGE (FIXED)

PANASONIC RZ970 projector – 1920x1200;  
10,000 Ansilumens; DLP projection system

## LIGHTS

### TRUSS IN FRONT OF THE STAGE

– 4 pc a led

### TRUSS BEHIND THE STAGE

– 6 par led  
– 1 strobo  
– 6 wash/beam led

### AUDIO – GROUND HALL

– 2 clusters hung above the stage, each consisting of: 2 Mitus 212FSA and 3 Mitus 206LA  
– 1 delay speaker hung mid-room, consisting of 4 Mitus 206LA

### AUDIO - BISTRÒ

– 1 cluster hung above the bar, consisting of 2 Mitus 206LA

BASE MILANO

SCHEDA VENUE

ROOM 1400



# Room 1400

Room 1400 is the BASE space that most clearly reflects its former industrial soul: overhead crane, courtyard view, and independent entrance. Suitable for exhibitions, live music, screenings, photoshoots, conferences, and gala dinners, with bar service available upon request.

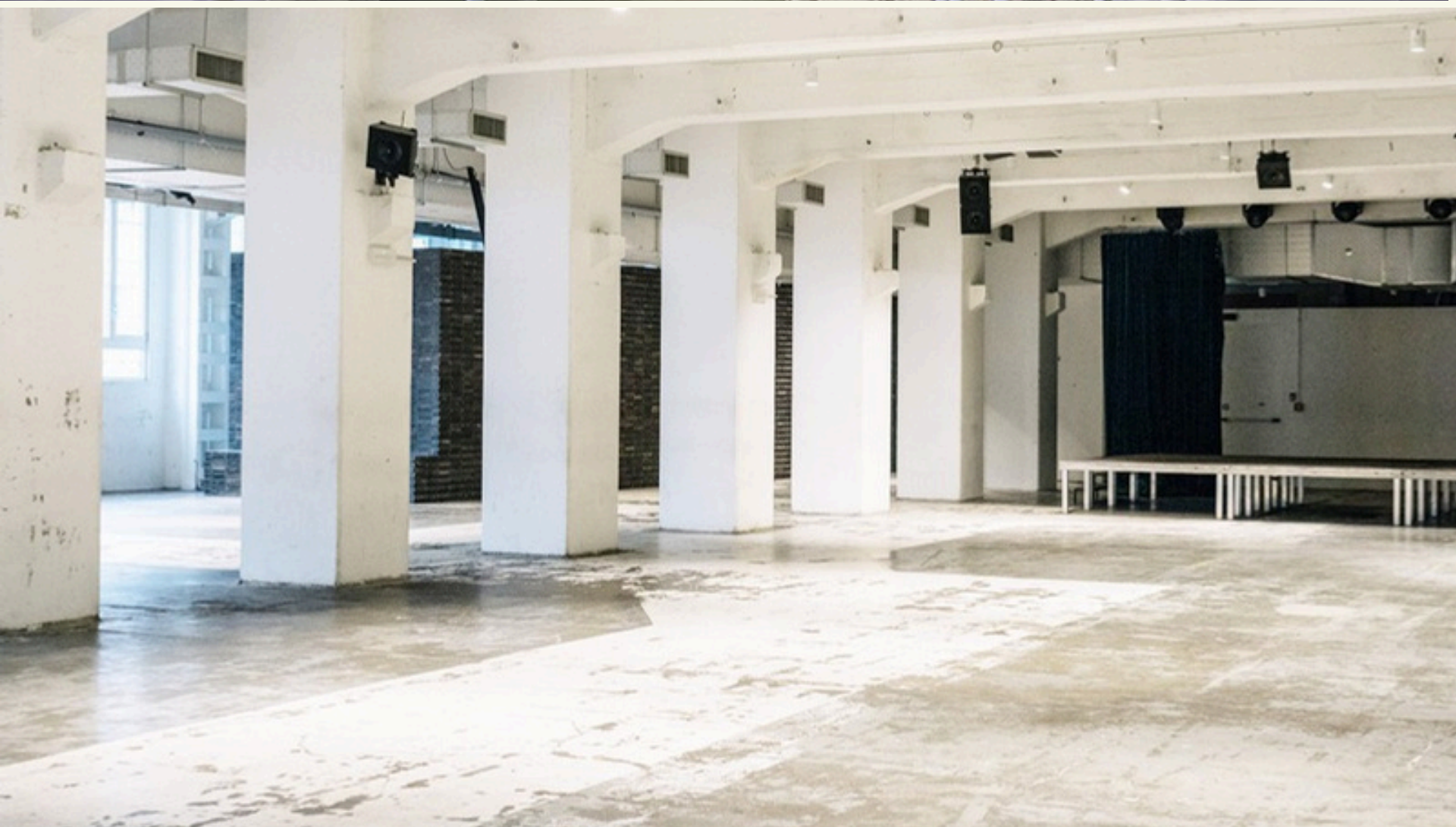
## DETAILS

- Mezzanine floor
- 1,200 mq
- Auditorium ramp (can be darkened with curtains)
- Directional light rails (non-dimmable)
- Heating / Air conditioning
- Dedicated Wi-Fi available upon request
- Entrance from courtyard
- Hanging eye bolt system (100 kg per point)
- Ceiling height: 4.7 m; Beam height: 3.8 m
- Auditorium: max ceiling height 5.8 m, max beam height 4.9 m
- Freight elevator shared with Room 2100
- Restrooms
- Capacity: 350 seated, 1,000 standing

N.B. The number of people varies depending on the type of event and setup.

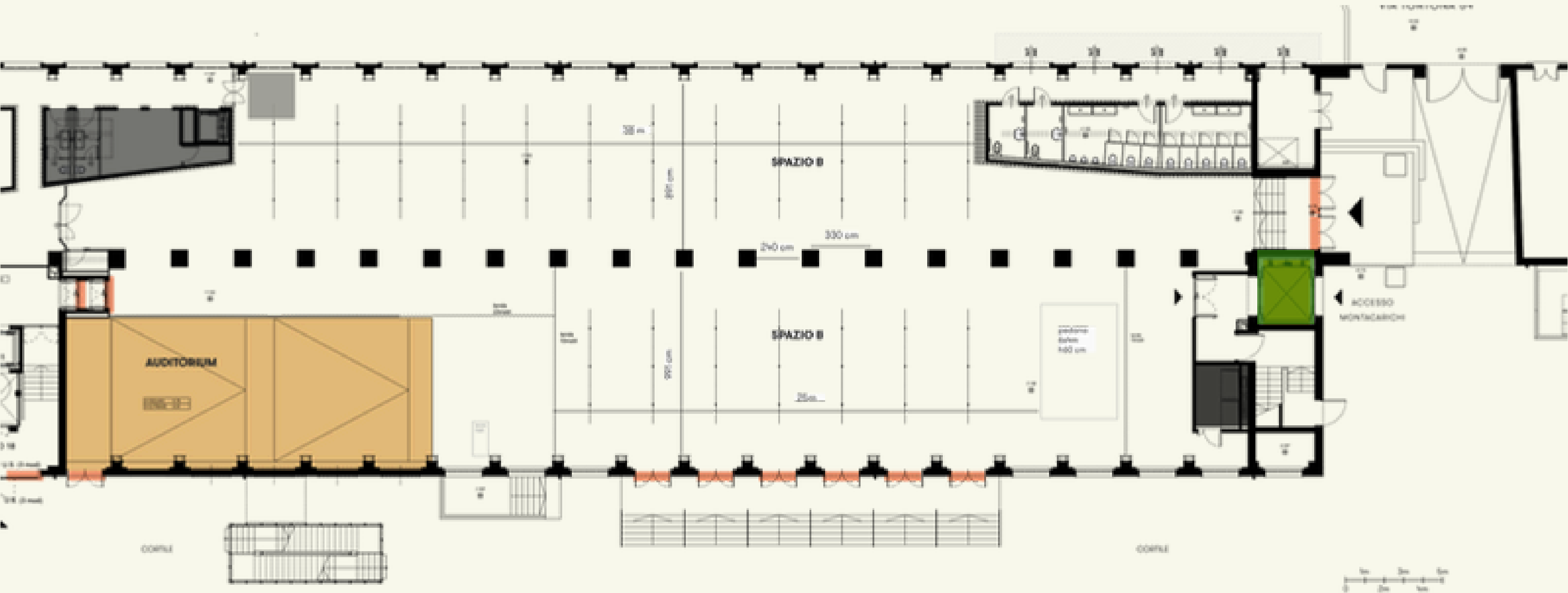












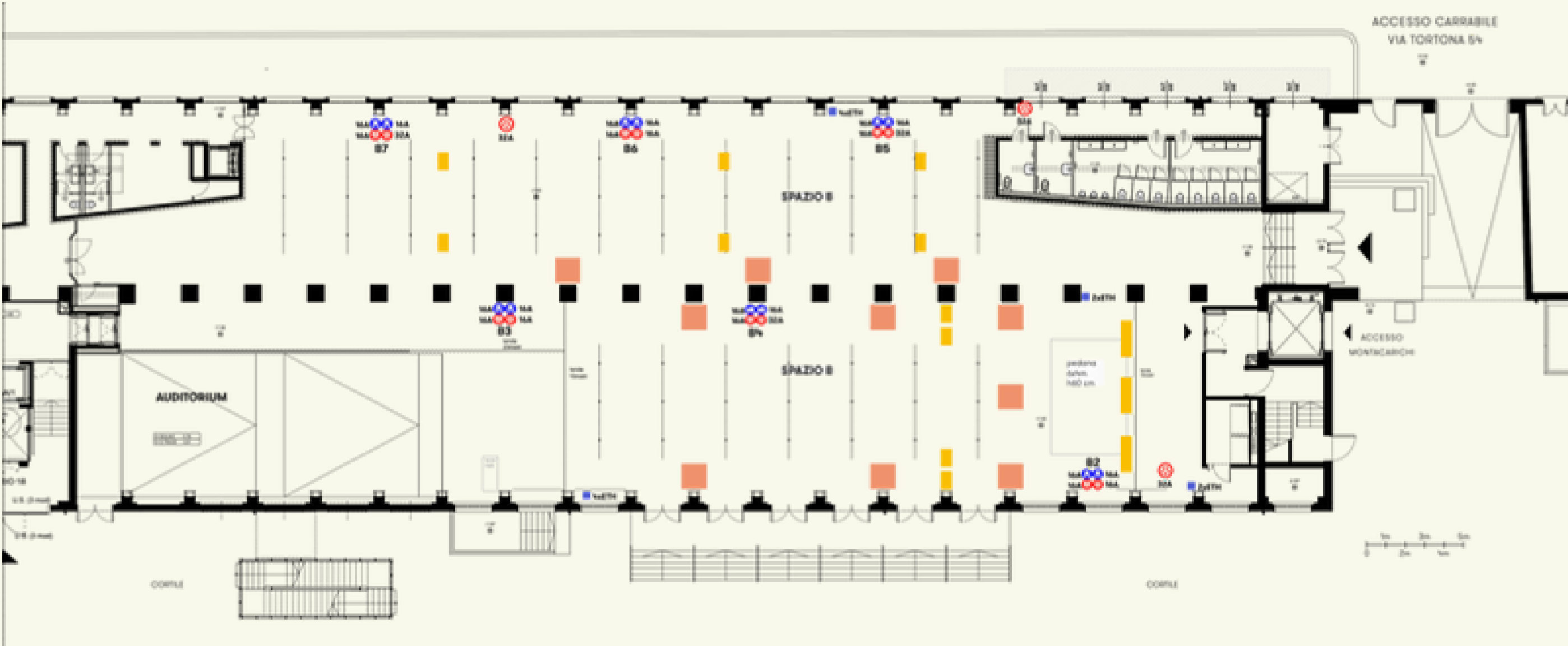
Room 1400



LEGEND

-  Panic door (184 L x 200 H)
-  AUDITORIUM (144mq)
-  Freight elevator
-  Non-occupiable areas

# Room 1400



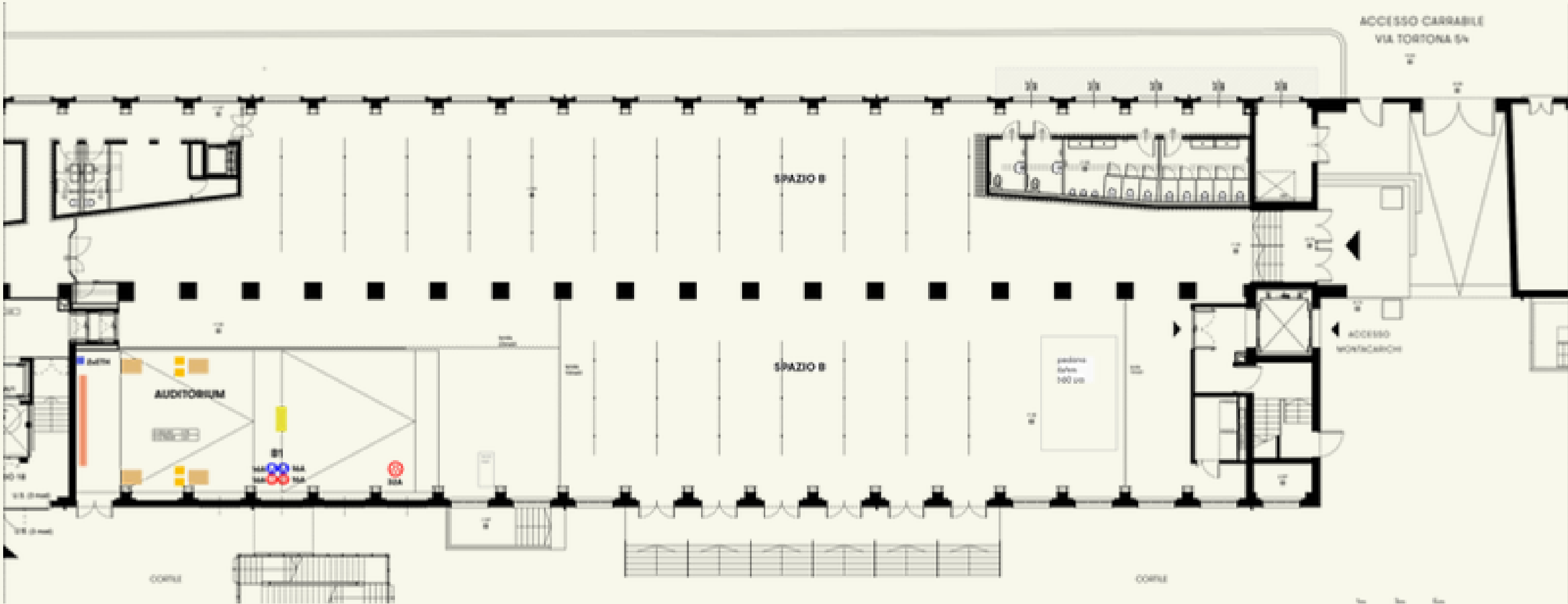
- MAIN PA**
- TOP
  - 4x K-Array KX12 (2 per lato)
  - SUB 2x K-Array KMT21I (One per side)
  - CENTRO/FRONT FILL
  - 1x K-Array KX12
  - DELAY
  - Two delay lines composed of da 2 KX12 (1 per lato)

- LIGHTS**
- The space has 4 fixtures for front white wash lighting
  - 4 Coemar lspot5757EB + 2 motorized rear beams
  - 4 rear PAR lights
  - The lights are controllable via Chamsys MagicQ interface on BASE's laptop

- AUDIO CONTROL ROOM**
- The presence of a BASE resident PA sound technician is mandatory for system use
  - The room does not have a resident audio console; one can be provided through our suppliers
  - Digital and analog transport from stage area to control room
  - PA system expandable as needed

- NAVE SOUND DISTRIBUTION**
- RESTROOMS/BAR**
- 3x K-Array KK102
- AMPLIFICATION**
- 2x K-Array KA24
- 1x K-Array KA84
- STAGE MONITORS**
- 2x K-Array KM112
- 2x K-Array KMT18I

# Auditorium



**AUDIO**

Modular and distributed Mitus series Line Array audio diffusion system by FBT. The entire system can be expanded as needed. Analog transport 8in-8out from the control room to the stage.

**AUDIO - AUDITORIUM**

- Yamaha D2040 processor with active preset for audio system management;
- 2 clusters hung for the main audio, each consisting of 3 Mitus 206LA;
- 2 Yamaha 21-08 speakers supporting audio for the front rows.

**LIGHTS**

- 4 halogen fixtures for front white wash lighting in the stage area;
- 6-channel analog mixer DDC-6 Starville in the control room.

**VIDEO**

- PANASONIC PTDZ870 projector – 1920x1200; 8,500 ANSI lumens; DLP projection system;
- Wall-mounted screen with black frame, 6 x 3.45 meters.
- Video available both in the control room and on stage.

BASE MILANO

VENUE SHEET

# ROOM 2100





# Room 2100

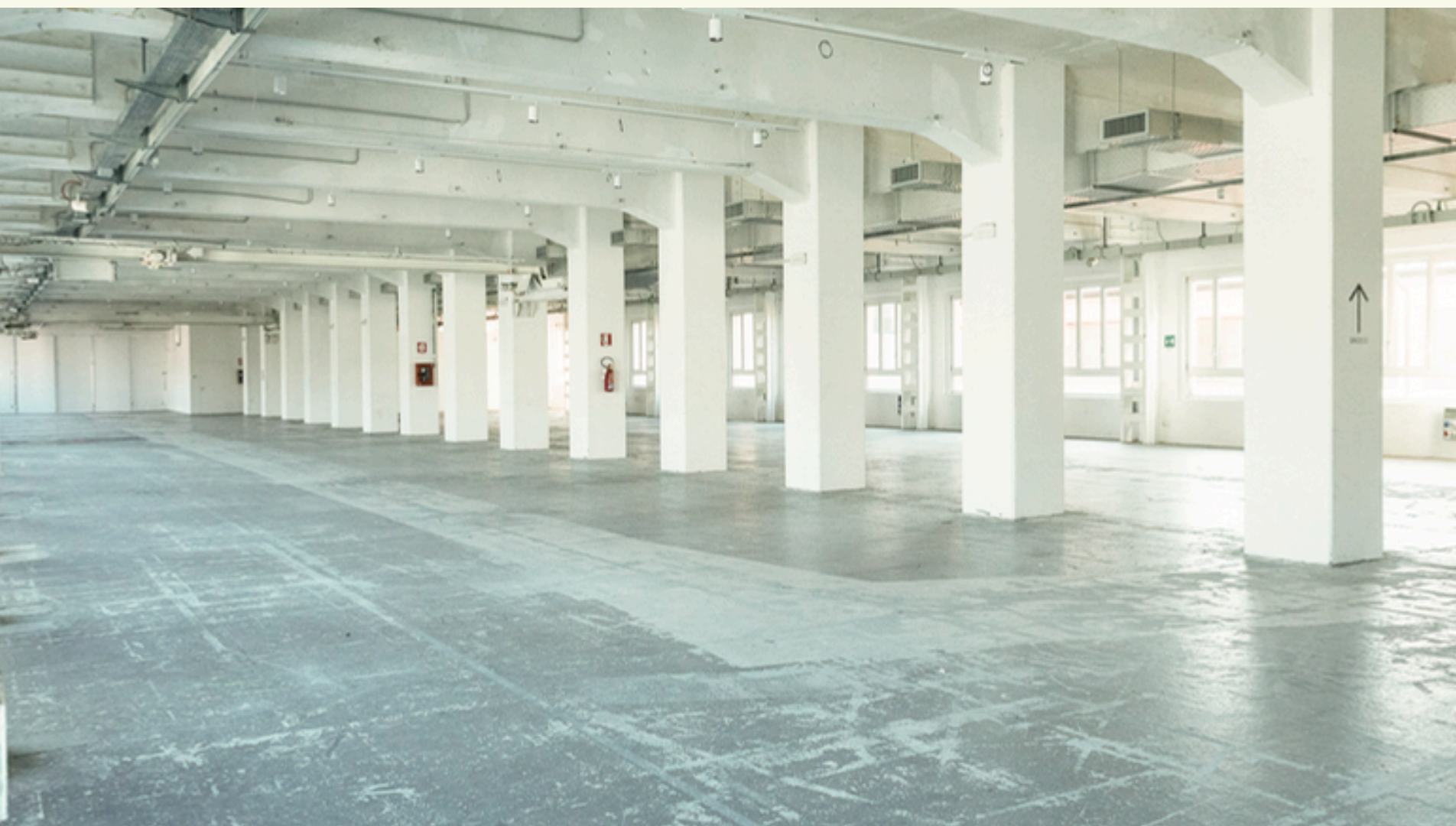
Room 2100 is the largest and most customizable space at BASE, the heart of Milan's design weeks. With movable walls that shape the environment, multiple entrances, and great flexibility, it is ideal for exhibitions, photoshoots, conferences, workshops, presentations, and special dinners.

## DETAILS

- First floor
- 2,000 mq
- Directional light rails (non-dimmable)
- Heating / Air conditioning
- Dedicated Wi-Fi available upon request
- Hanging eye bolt system (100 kg per point)
- Ceiling height: 4.6 m; Beam height: 3.9 m
- Freight elevator shared with Room 1400 and Room 2100/2
- Restrooms
- Capacity varies depending on event type and setup



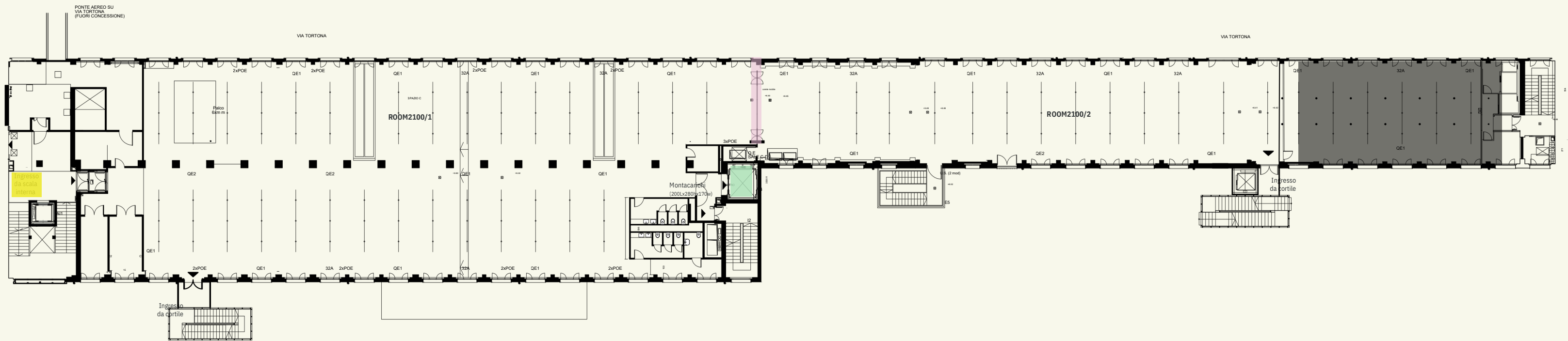






OVERALL FLOOR PLAN

Room 2100



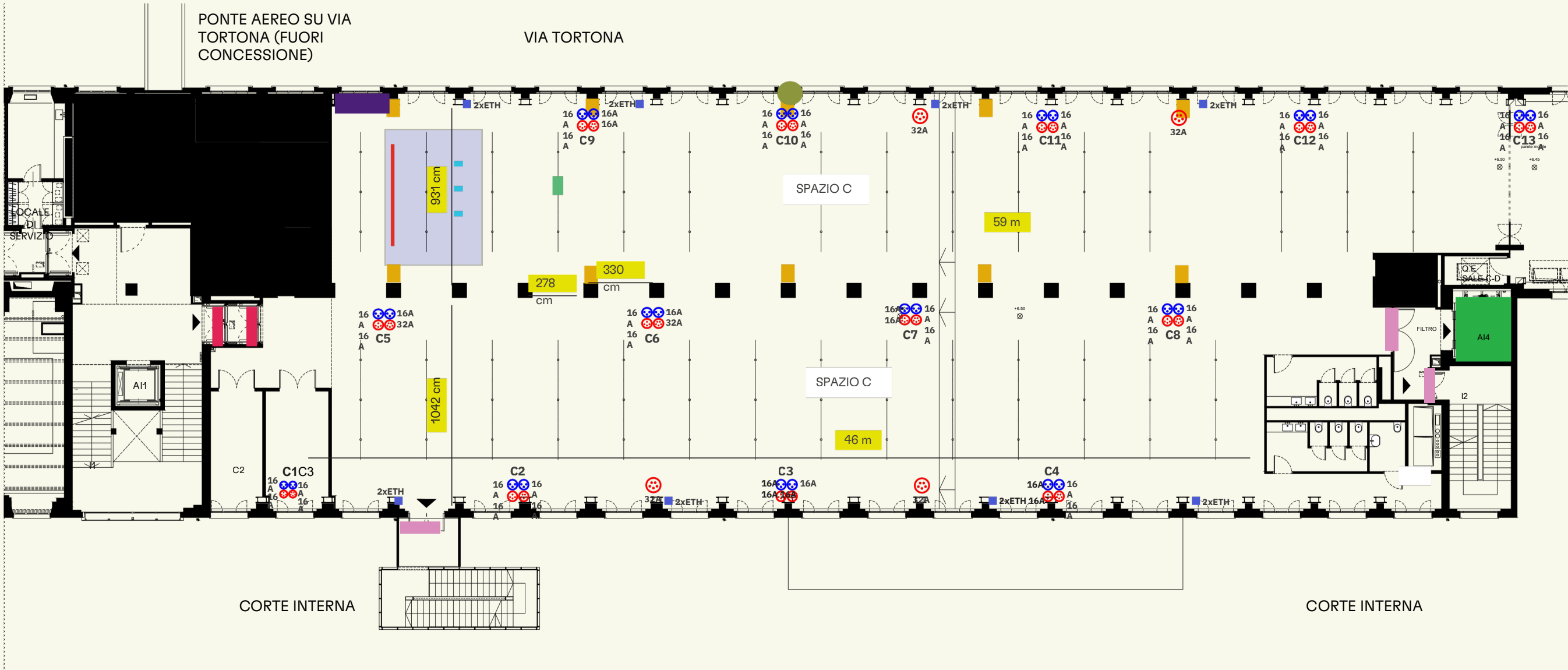
■ NON-OCCUPIABLE AREA

■ MOVABLE WALL

■ FREIGHT ELEVATORS



Room 2100/1



LEGEND

- Montacarichi (200 L x 280 H x 170 W)
- Panic door (184 L x 200 H )
- Non-occupiable area

LEGENDA TECNICA

- Screen
- 3 x Stairville HL-x180 CW/WW
- 10 x The Box Pro Achat 206 WH  
Configuration: 2 x 6" woofers and 1" compression tweeter / Power: 250W RMS, 1000W peak / Impedance: 8 Ohm

- VPR (Video projector) : Panasonic PT-MZ882BEJ, 1920 x 1200 WUXGA, 8200 Lumen
- Mixer: Behringer RX1602 V2
- Control amp: 3 x the t.amp E4-250

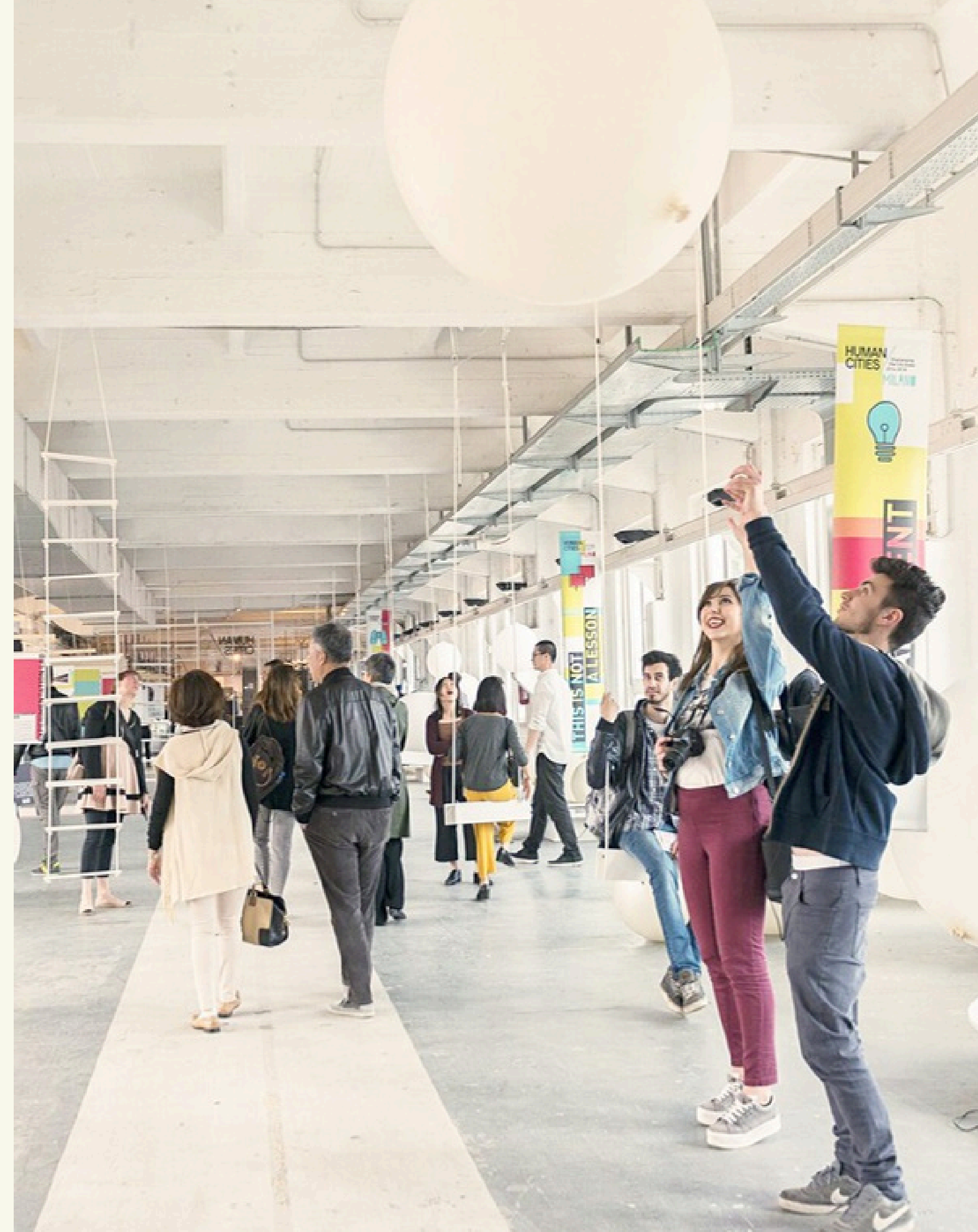
- Stage 6x4 m

# Room 2100/2

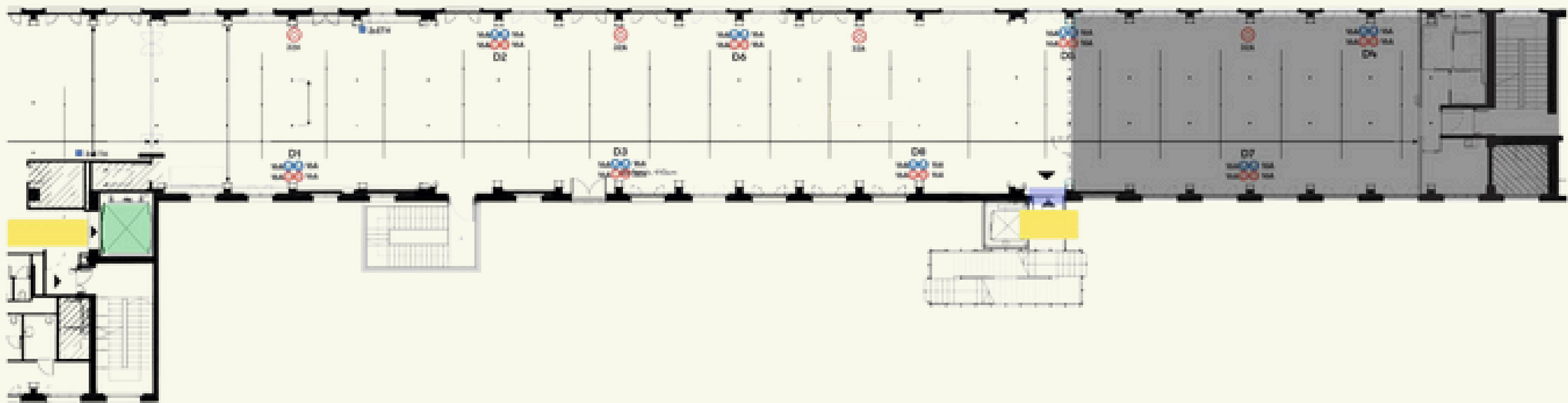
Room 2100, the largest and most flexible space at BASE, can be divided in its rear section, known as Room 2100/2. This intimate and versatile area is ideal for exhibitions, presentations, or exclusive events, with access via an external staircase and a dedicated entrance at Via Tortona 54.

## DETAILS




- First floor
- 800 mq
- Directional light rails (non-dimmable)
- Truss setup
- Heating / Air conditioning
- Dedicated Wi-Fi available upon request
- Restrooms (shared with Room 2100/1)
- Freight elevator (shared with Room 1400 and Room 2100/1)
- Staircase with elevator
- Hanging eye bolt system (100 kg per point)
- Ceiling height: 4.6 m; Beam height: 3.9 m
- Capacity varies depending on event type and setup



# Room 2100/2



LEGEND

-  French door (L190 x H 200)
-  Freight elevator (L 200 x H 280 x W 170)
-  Non-occupiable area

TRUSS STRUCTURE

# Room 2100/2



## HANGING POINTS

Global Truss F34200 Truss 2,0 M

BASE MILANO

SCHEDA VENUE

YESROOM



BASE MILANO

VENUE SHEET

# YESROOM

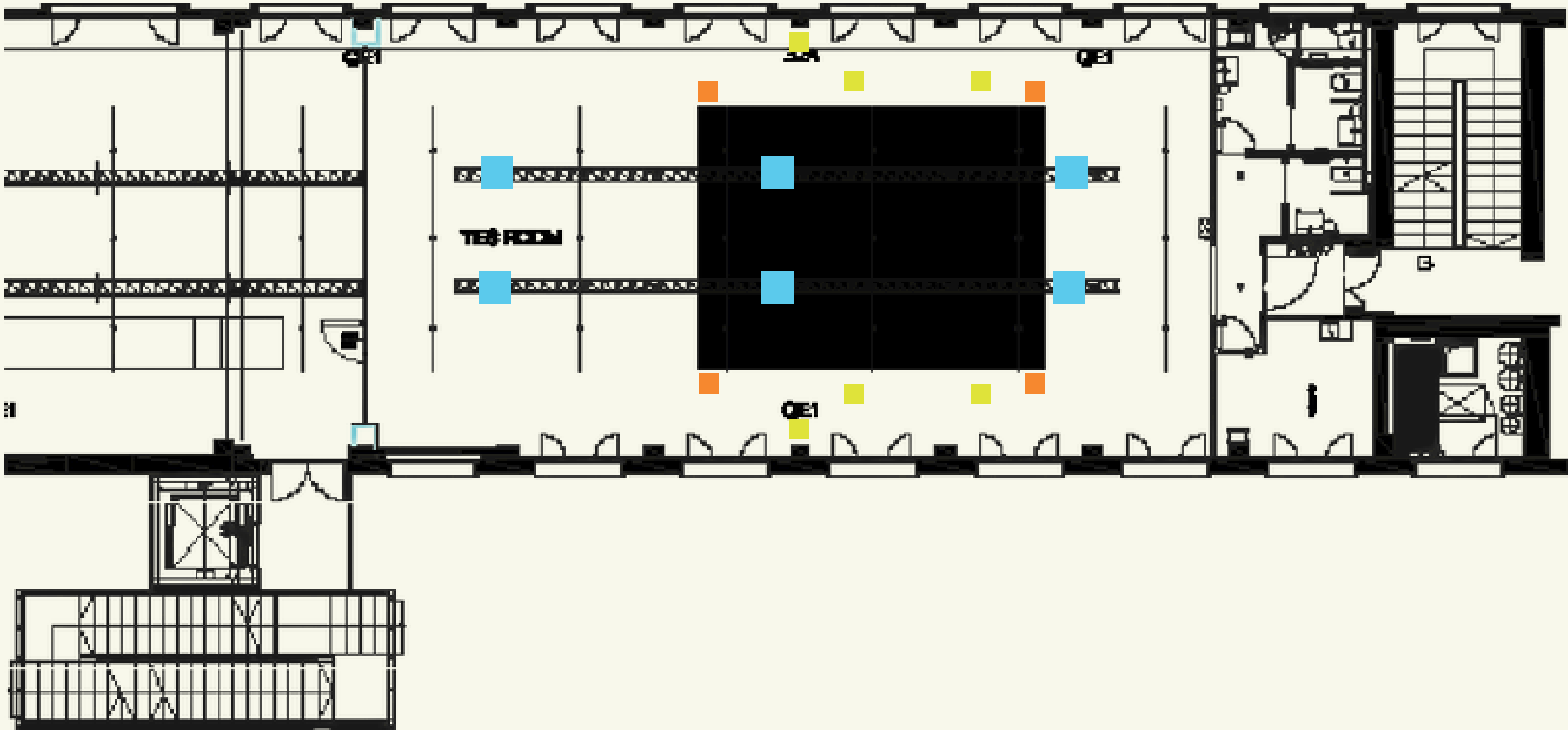
An intimate space, ideal for talks, workshops, and presentations for up to 80 people. YesRoom also serves as a meeting place for the local community and artist residencies, while for companies it transforms into a cozy and inspiring venue for small-scale events.

## DETAILS

- First floor
- 185 mq
- Audio and lighting system (available upon request)
- Directional light rails (non-dimmable)
- Heating / Air conditioning
- Dedicated Wi-Fi available upon request
- Restrooms
- Staircase with elevator
- Hanging eye bolt system (100 kg per point)
- Ceiling height: 4.6 m; Beam height: 3.9 m
- Capacity: 80 people



yesROOM



LIGHTS

- Shapers: 4x Starville RevueLED 150 Profile 3200K 26° + 2x 200w LED Zoom Profile RGB
- Par: 4x Eurolite LED Theatre COB 100 RGB+WW
- Controller: Botex Controller DMX DC-1224
- Dmx Splitter: Stairville DMX Splitter 8 USB 3 pin

AUDIO

- Mixer: Yamaha mg10Xu
- Stage monitor: 4 passive monitor speakers LD System SAT 62 G2 Pair (RMS/max 80/130 w)
- Impianto PA: 2 passive speakers Electro Voice Evid 4.2 (100 w full range)
- Finale: T.amp E4-130

- Hanging points: 2 parallel F34 trusses at the center of the room (15 meters long) / maximum load to be defined based on the project
- Floor: Resin-coated concrete (not completely even / industrial space)
- Dance floor: Linoleum, 6 x 8 m



BASE MILANO

VENUE SHEET

# CASABASE



# casaBASE

CasaBASE is a blend of design hostel and creative residence: an original space that becomes a set for photoshoots, videos, and small site-specific events. A place that combines hospitality and creativity, capable of giving a unique character to every project.

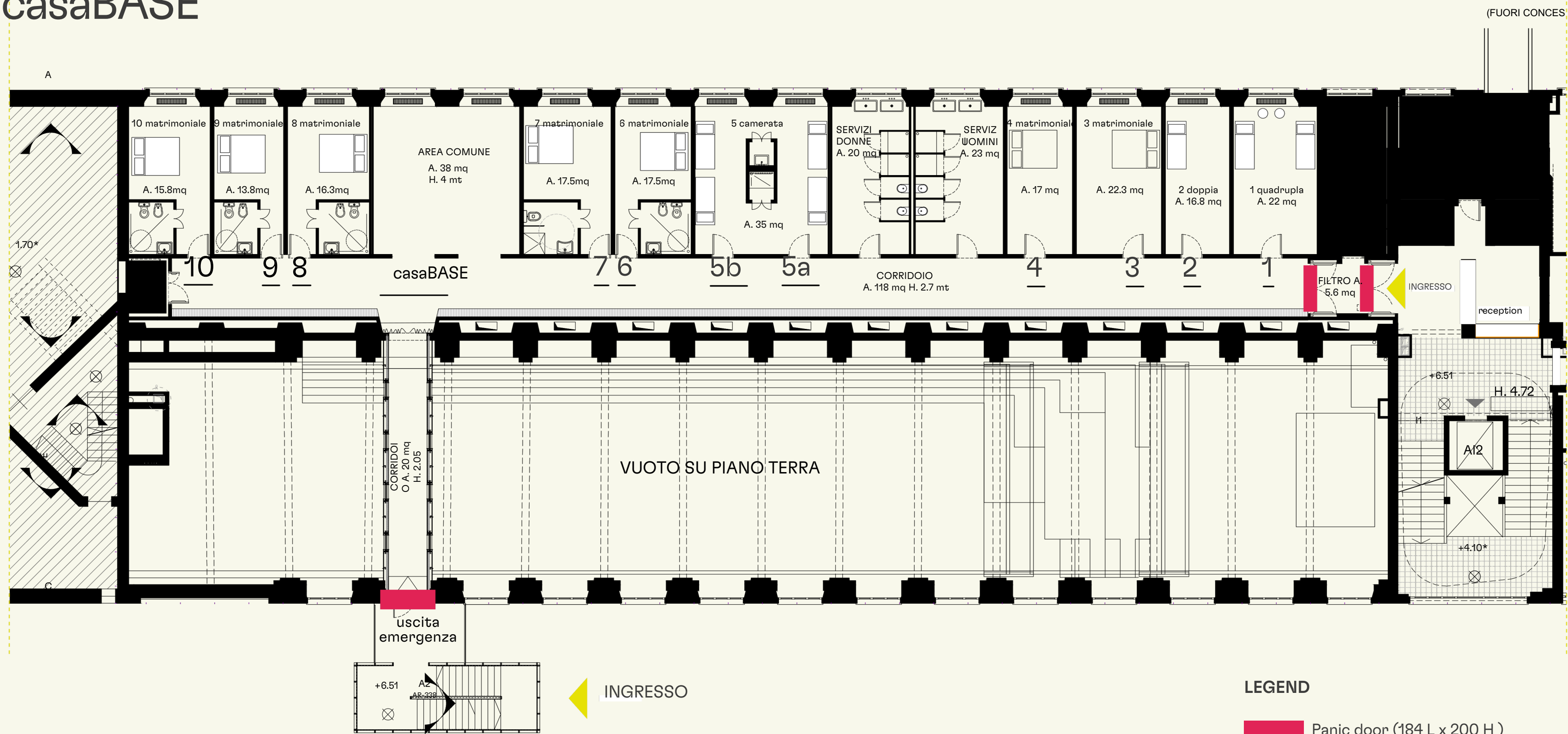
## DETAILS

- First floor
- 5 guest rooms with shared bathrooms
- 5 double rooms with private bathrooms
- 2 shared bathrooms
- Common area of 38 mq
- Corridor of 118 sqm
- 220V power outlets only in the common area (1.5 KW available)
- Access via external staircase
- Access via internal staircase with elevator





casaBASE



LEGEND

Panic door (184 L x 200 H )

Non-occupiable area

BASE MILANO

VENUE SHEET

# MUSICROOMS



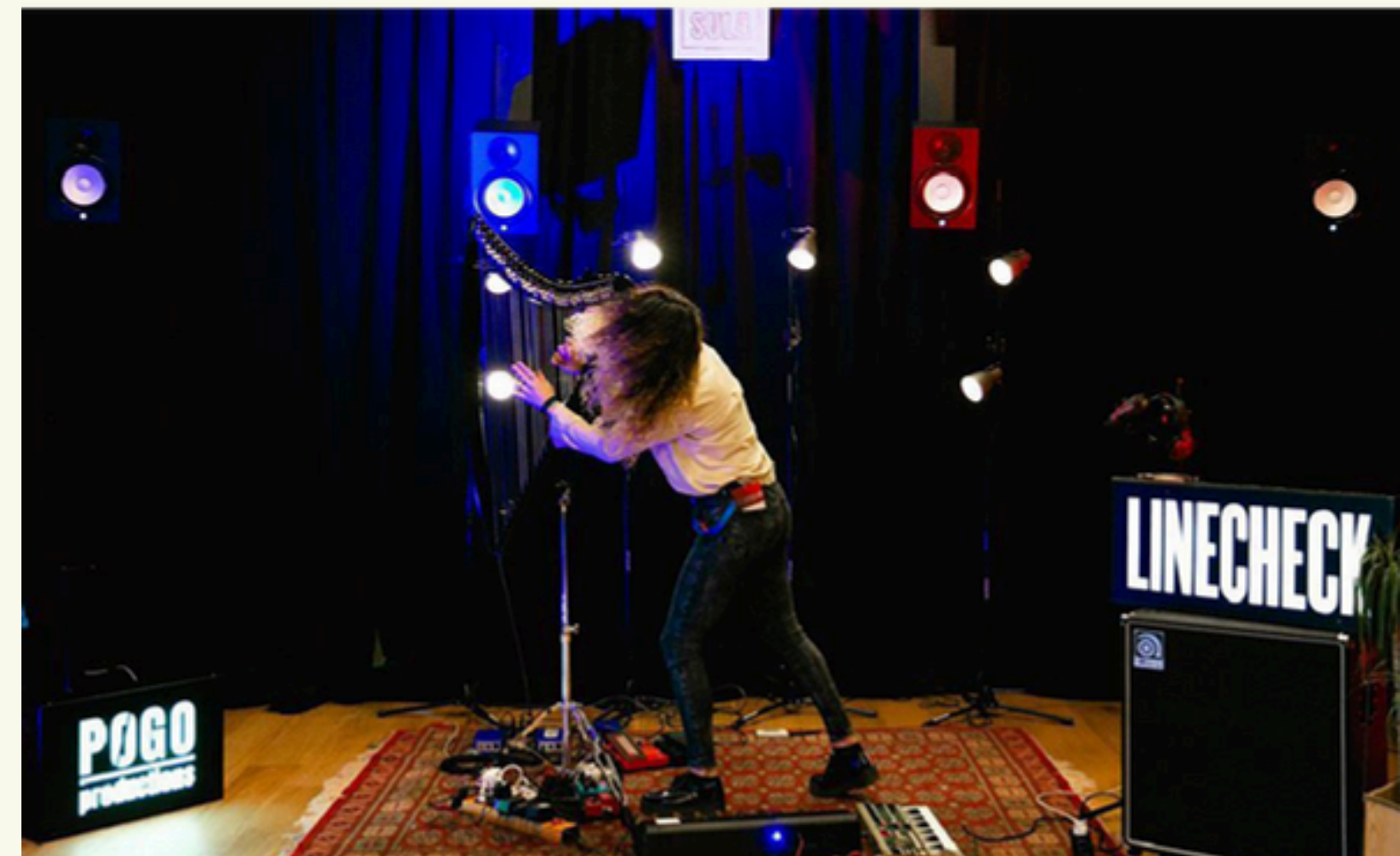


# MUSICROOMS

Located on the mezzanine first floor, the music hub hosts multipurpose rooms for training, showcases, workshops, and creative coworking. An ideal location for small talks, workshops, and activities related to music and cultural innovation.

## DETAILS

- Mezzanine first floor
- Workspace with approximately 40 workstations
- La Capsula: a 360° sound recording studio
- Dedicated Wi-Fi available upon request
- Access via external staircase
- Access via internal staircase with elevator



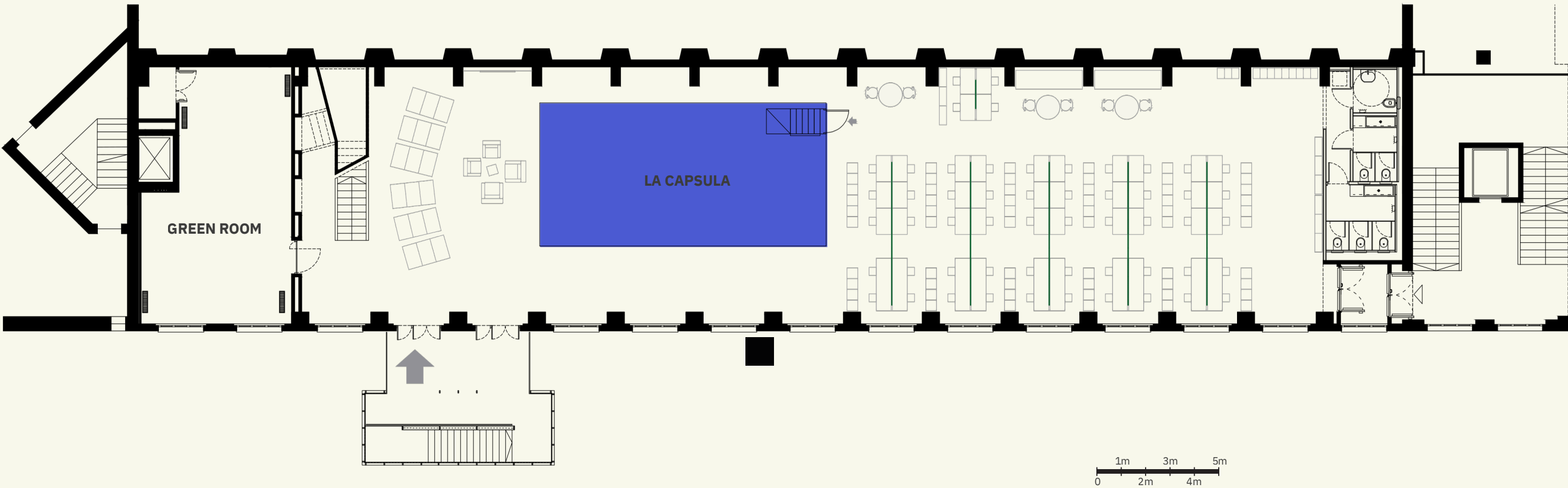
The floor plan shows a building layout with the following areas and dimensions:

- UFFICIO PRIVATO** (Private Office): A green rectangular area on the left, measuring 10,7 m by 6,3 m.
- LA CAPSULA** (The Capsule): A blue rectangular area in the center, measuring 12 m by 6 m.
- COWORKING**: An orange rectangular area on the right, measuring 10,7 m by 49,6 m.
- INGRESSO** (Entrance): Indicated by a yellow arrow pointing to the main entrance on the right side.
- INGRESSO** (Entrance): Indicated by a yellow arrow pointing to a secondary entrance at the bottom center.
- Staircases**: Several staircases are shown, including one on the far left, one near the private office, and one near the main entrance.
- Restrooms**: A set of restrooms is located near the main entrance on the right.
- Tables and Chairs**: Various tables and chairs are scattered throughout the plan, including a large table in the center and several smaller tables near the restrooms.

- Private office (68mq)
- La Capsula (72mq)
- Coworking (110mq)
- Panic door (184 L x 200 H)
- Elevator
- Non-occupiable area



# La Capsula



**AUDIO**

- 24x YAMAHA HS8i
- 08x YAMAHA HS5i
- 04x YAMAHA HS 8S
- 01x YAMAHA TF1
- 01x YAMAHA TIO1608D
- 01x YAMAHA SWP1-8 NETWORK SWITCH
- 01x YAMAHA SWR 2100P
- 01x TASCAM 32D CONVERTER AD/DA
- 01x DANTE VIRTUAL SOUND CARD LICENCE
- 01x DANTE AVIO ADAPTOR IN
- 01x DANTE AVIO ADAPTOR OUT
- 01x DANTE AVIO ADAPTOR USB
- 01x BEHRINGER POWERPLAY P16-I
- 04x BEHRINGER POWERPLAY P16-M
- 05x HEADPHONES

**MICS**

- 02x AKG C 451 B
- 01x AKG D112
- 01x AKG P170
- 03x SHURE SM58
- 06x SHURE SM57

**BACKLINE**

- 01x PEARL HWP-830 HARDWARE SET
  - 01x BC-830 CYMBAL BOOM STAND
  - 01x C-830 STRAIGHT CYMBAL STAND
  - 01x H-830 HI-HAT STAND
  - 01x S-830 SNARE STAND
  - 01x P-930 SINGLE BASS DRUM PEDAL
- 01x YAMAHA STAGE CUSTOM
  - 01x KICK 22” + 02x CL945B
  - 04x TOM 10”/12”/14”/16” + 01x CL945B
- 01x PEARL D-790 DRUM THRONE
- 01x AMPEG SVT-410 HE BASS AMP
- 01x FENDER TWIN REVERB 65 GUITAR AMP
- 01x DJ MULTIEFFECT BOX INTORNO LABS 01x AKAI MPD218
- 02x MUSIC STAND
- 02x GUITAR STAND
- 02x KEYBOARD STAND
- 10x MIC STAND TALL
- 01x MIC STAND LITTLE
- 01x KICK MIC STAND
- 04x D.I. KLARK TEKNIK DN 100

**SOFTWARE / IT**

- 01x FACEBOOK 360
- 01x INTORNO LABS 3D AUDIO ENGINE
- 01x INTORNO LABS ABLETON LIVE PLUG-IN
- 01x APP INTORNO LABS SPC
- 01x MAX8
- 01x ABLETON LIVE 10 SUITE
- 01x OBS
- 02x MAC MINI
- 01x NUC

**VIDEO**

- 01x CAMERA AXIS 360 + REMOTE CONTROLS
- 01x TELESCOPIC MOTORIZED BRACKET
- 02x BLACKMAGIC MICROSTUDIO CAMERA 4K
- 01x BLACKMAGIC ATEM 1 M/E PRODUCTION STUDIO 4K
- 01x BLACKMAGIC WEB PRESENTER
- 04x TV MONITOR FULL HD 22” PHILIPS 223V5LSB2

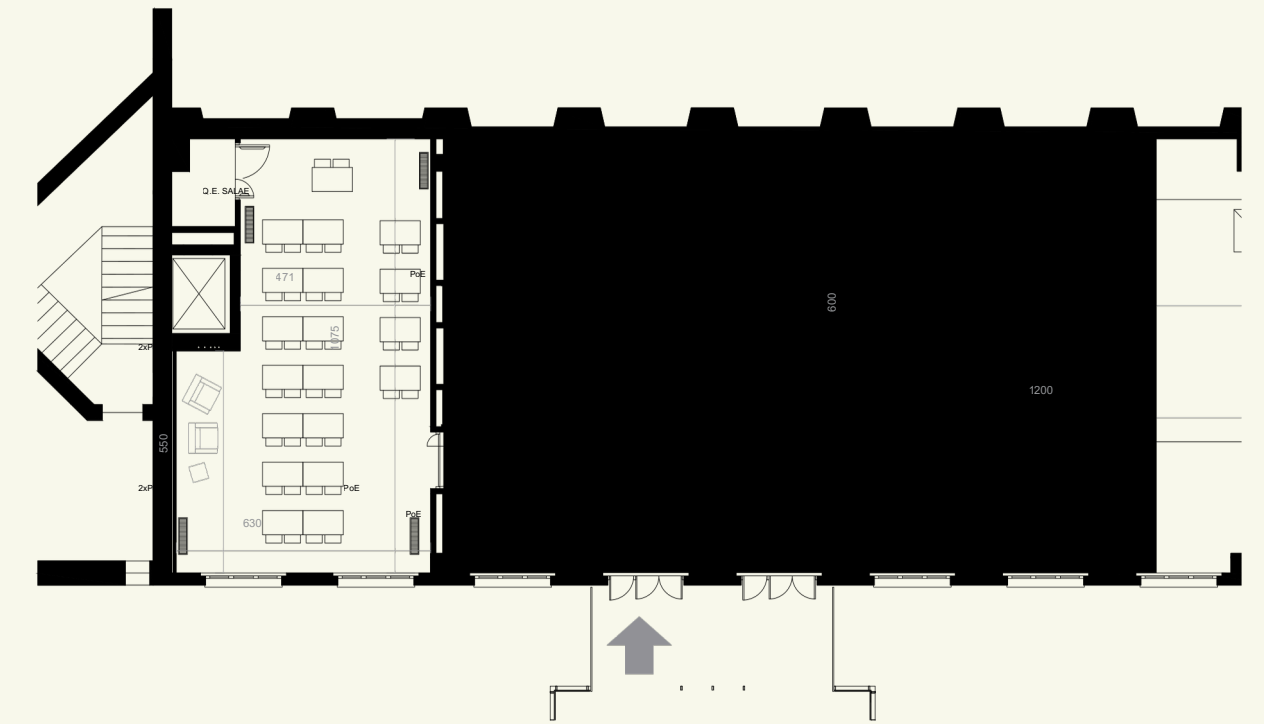


BASE MILANO

VENUE SHEET

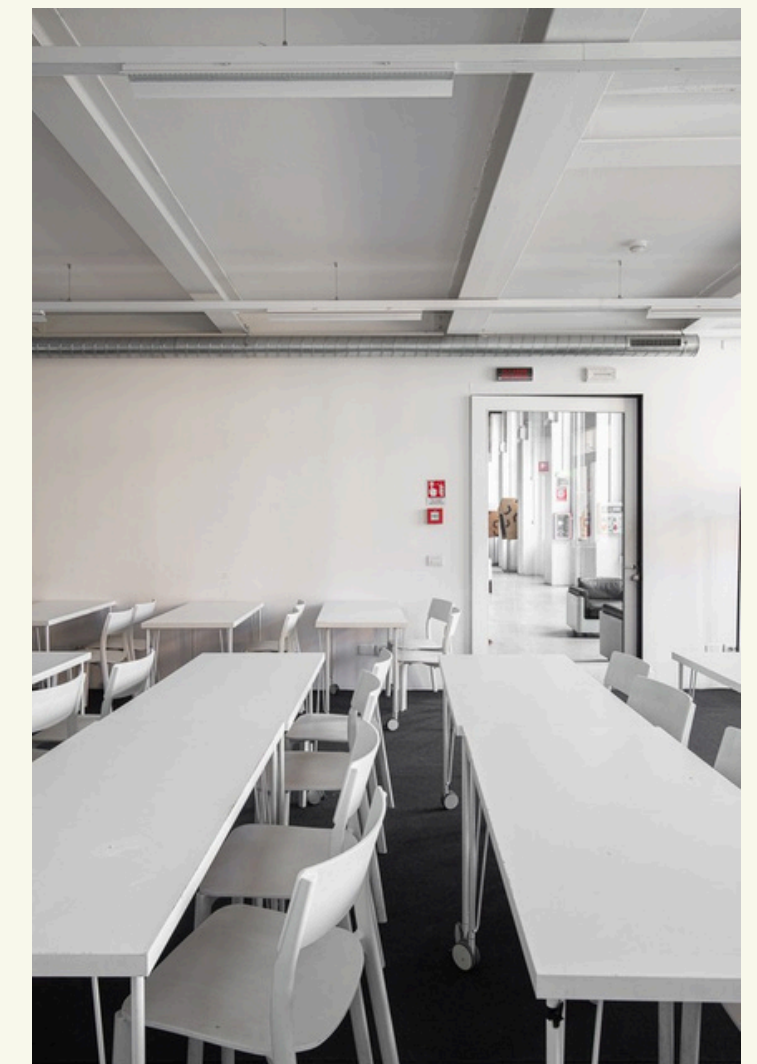
# Ufficio privé

Workspace dedicated to meetings and training activities. Equipped with white school desks on wheels and front-facing chairs.



## DETAILS

- Mezzanine first floor
- Workspace with approximately 36 workstations
- Dedicated Wi-Fi available upon request
- 55” monitor
- Access via external staircase
- Access via internal staircase with elevator



BASE MILANO

VENUE SHEET

# Green Room

Workspace dedicated to meetings and training activities. Furnished with white school desks on wheels and front-facing seats.



## DETAILS

- Mezzanine first floor
- Workspace with approximately 12 workstations
- Dedicated Wi-Fi available upon request
- Access via external staircase





BASE MILANO

VENUE SHEET

# TERRAZZA



# Terrazza

BASE's terrace is the most surprising spot: a rooftop garden with views of Milan's skyline. Perfect for dinners, aperitifs, private parties, photoshoots, and intimate concerts. Equipped with a bar and dedicated catering, it offers exclusive access and an unforgettable atmosphere.

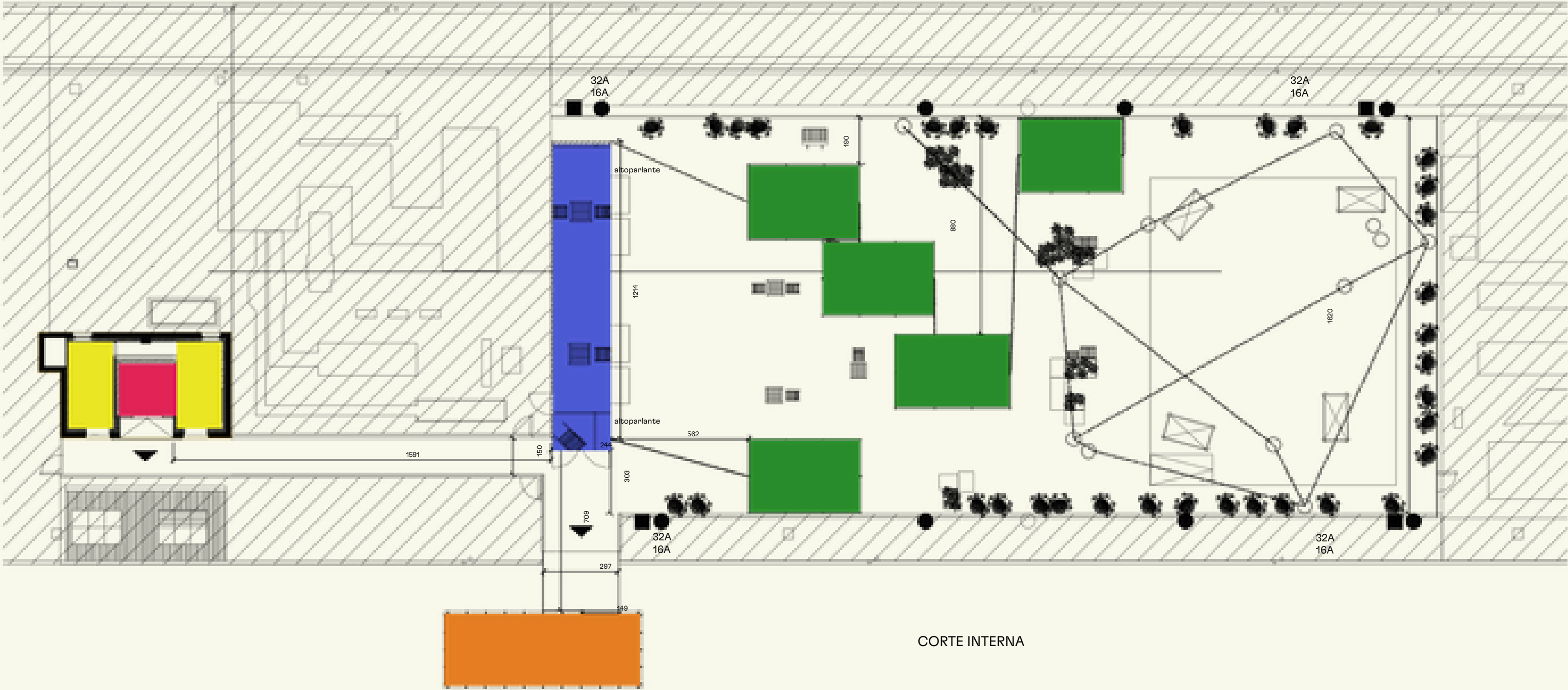
## DETAILS

- Fourth floor
- Bar area
- Tables and chairs
- Reserved access
- 220V power outlets
- Industrial power outlets
- Water connections
- Elevator
- Maximum capacity: 70 people (subject to setup)





# Terrazza



LEGENDd

- Covers – gazebos
- Bar area
- External staircase exit
- Elevator
- Restrooms

# ADDITIONAL SERVICES

Assistance and management in event production and scheduling

Catering (exclusive service with in-house provider)

Hostess and cloakroom service

Guest accommodation

Service audio, luci e video distribuzione elettrica

Setup and furnishings

Permit management and safety protocol

Cleaning, security, and porterage services

Media and communication package



# LET'S TALK!

**BASE**

BASE Milano  
via Bergognone 34  
20144, Milano, Italy  
[base.milano.it](http://base.milano.it)

The content of this document (including texts, images, logos, artistic/design work, ideas, graphics, etc.) is the property of OXA S.r.l. and, by extension, BASE Milano, and is protected by intellectual property rights. Copying, appropriating, redistributing, or reproducing any phrase, content, project, or image contained herein — the result of the authors' work and intellect — is strictly prohibited.

Sources for the reference slides are taken from the official websites of each presented entity solely for illustrative purposes. Copying and reproducing content and images in any form is forbidden. Redistribution and publication of content and images without explicit authorization from OXA S.r.l. is prohibited.